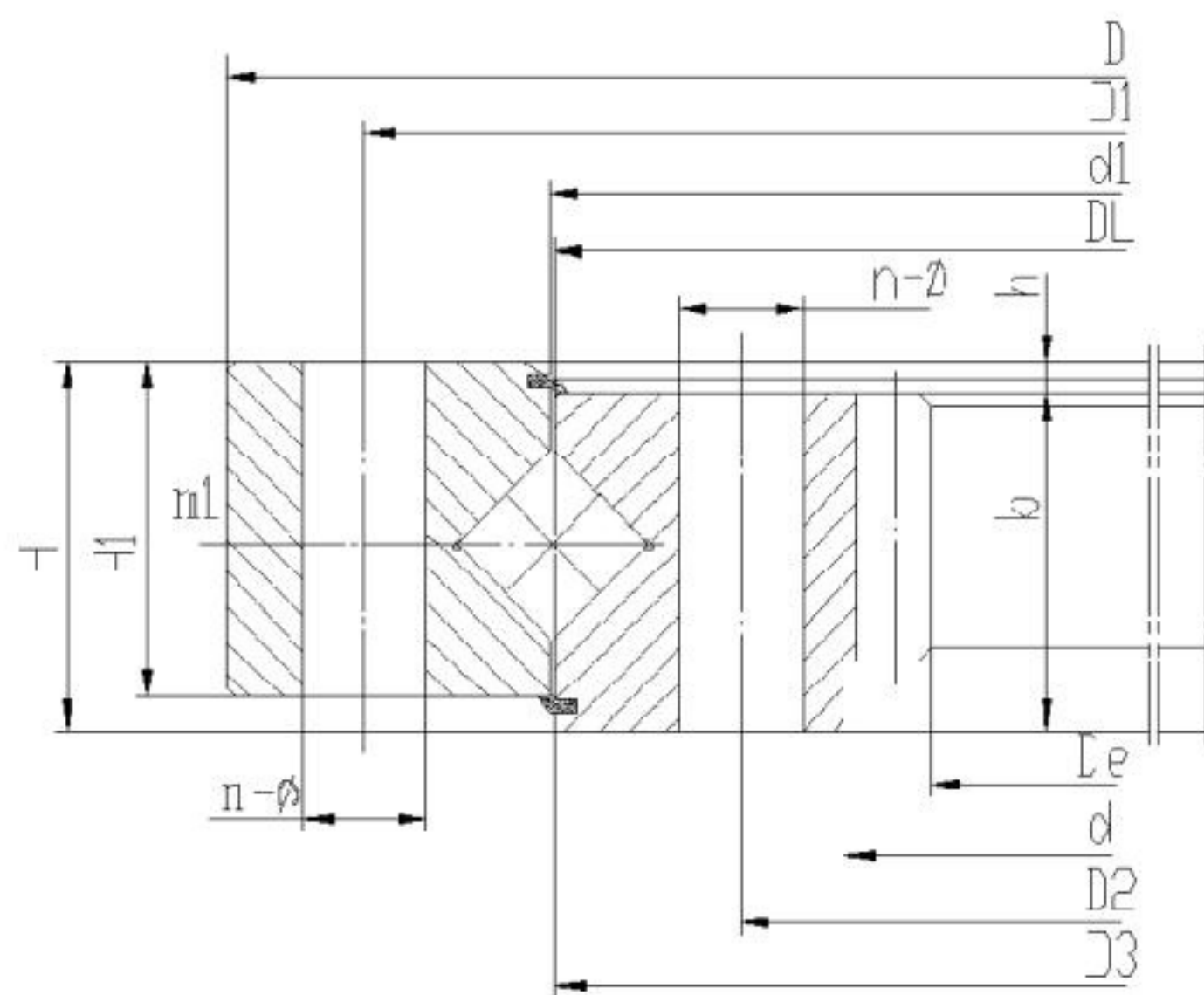


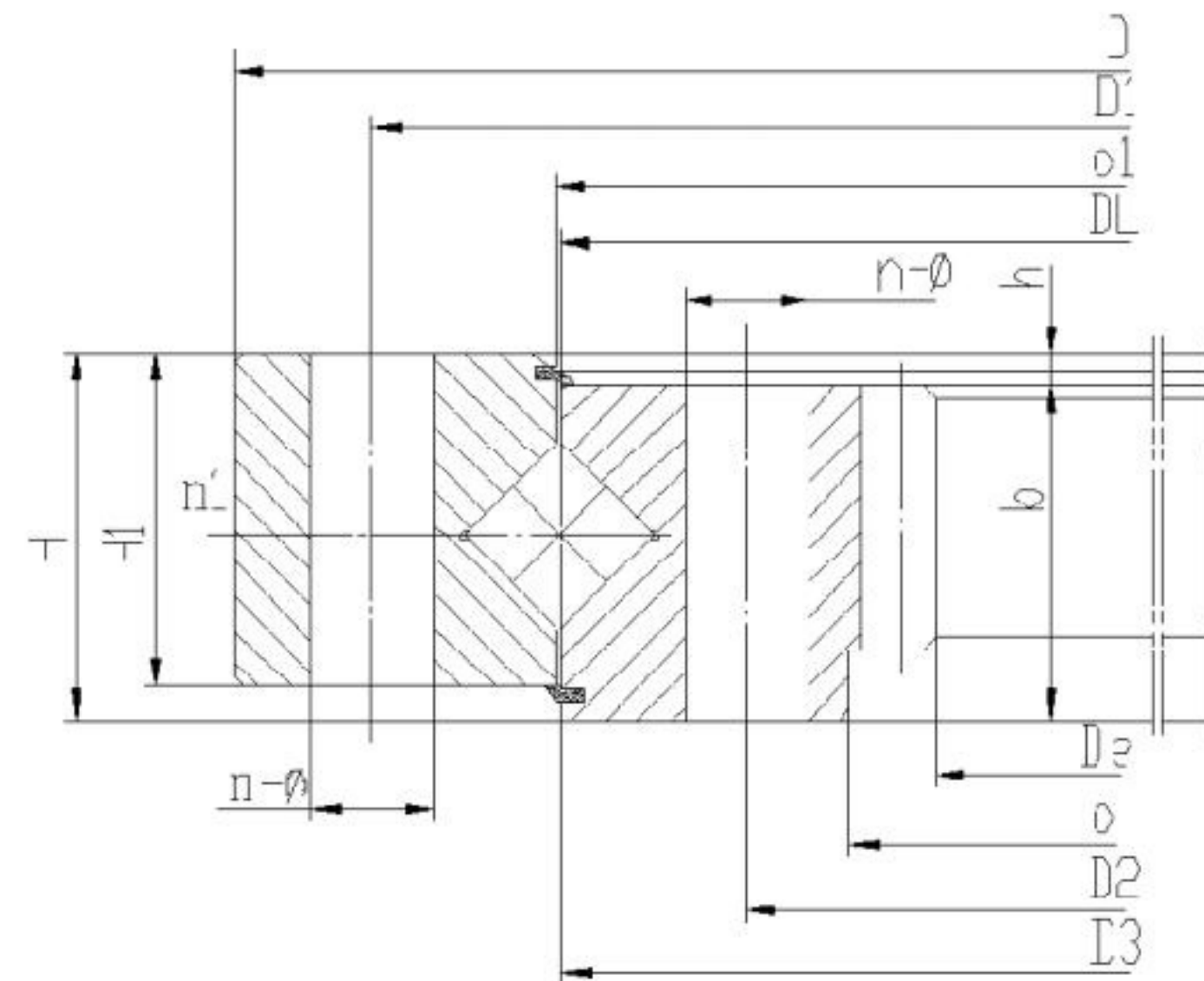
Internal-toothed Single Row Crossed Roller Slewing Bearings



- NOTE:
- 1. n1 is the number of lubricating oil holes, the customer can specify the location of oil holes according to the use situation.
 - 2. n-φ can be changed into thread hole, thread diameter M, thread depth 2M.
 - 3. The specifications in this sample are standard products, please contact SINOFOUV for any other special requirements.

Bearing Part Number	Boundary Dimensions				Mounting Hole Dimensions					Configuration Dimensions						Gear Parameter				Weight kg
	De	D	d	H	D1	D2	n	φ		D3	d1	H1	h	n1	M	m	Z	b	x	
	mm				mm			mm		mm					mm			mm		
HJN500	367	602	398	75	566	434	20	18		498	502	65	10	4	16	5	74	60	+0.5	85
HJN500M	368.4	602	398	75	566	434	20	18		498	502	65	10	4	16	6	62	60	+0.5	85
HJN560	427	662	458	75	626	494	20	18		558	562	65	10	4	16	5	86	60	+0.5	96
HJN560M	428.4	662	458	75	626	494	20	18		558	562	65	10	4	16	6	72	60	+0.5	96
HJN630	494.4	732	528	75	696	564	24	18		628	632	65	10	4	16	6	83	60	+0.5	110
HJN630M	491.2	732	528	75	696	564	24	18		628	632	65	10	4	16	8	62	60	+0.5	110
HJN710	572.4	812	608	82	776	644	24	18		708	712	65	10	4	16	6	96	60	+0.5	126
HJN710M	571.2	812	608	82	776	644	24	18		708	712	65	10	4	16	8	72	60	+0.5	122
HJN800	635.2	922	678	82	878	722	30	22		798	802	72	10	6	20	8	80	65	+0.5	186
HJN800M	634	922	678	82	878	722	30	22		798	802	72	10	6	20	10	64	65	+0.5	186
HJN817	685	920	712	70	880	751	30	22		815	819	60	10	5	20	5	139	53	0	115
HJN900	739.2	1022	778	82	978	822	30	22		898	902	72	10	6	20	8	93	65	+0.5	208
HJN900M	734	1022	778	82	978	822	30	22		898	902	72	10	6	20	10	74	65	+0.5	208
HJN1000	824	1122	878	82	1078	922	36	22		998	1002	72	10	6	20	10	83	65	+0.5	220
HJN1000M	820.8	1122	878	82	1078	922	36	22		998	1002	72	10	6	20	12	69	65	+0.5	220
HJN1094S	920	1216	920	100	1172	1013	12	22		1092	1096	90	10	4	20	10	94	90	0	393
HJN1120	944	1242	998	82	1198	1042	36	22		1118	1122	72	10	6	20	10	95	65	+0.5	273
HJN1120M	940.8	1242	998	82	1198	1042	36	22		1118	1122	72	10	6	20	12	79	65	+0.5	273
HJN1250	1048.8	1390	1110	91	1337	1163	40	26		1248	1252	81	10	5	24	12	88	75	+0.5	386
HJN1250M	1041.6	1390	1110	91	1337	1163	40	26		1248	1252	81	10	5	24	14	75	75	+0.5	390
HJN1400	1192.8	1540	1260	91	1487	1313	40	26		1398	1402	81	10	5	24	12	100	75	+0.5	441
HJN1400M	1195.6	1540	1260	91	1487	1313	40	26		1398	1402	81	10	5	24	14	86	75	+0.5	441
HJN1600	1391.6	1740	1460	91	1687	1513	45	26		1598	1602	81	10	5	24	14	100	75	+0.5	502
HJN1600M	1382.4	1740	1460	91	1687	1513	45	26		1598	1602	81	10	5	24	16	87	75	+0.5	517
HJN1800	1573.6	1940	1660	91	1887	1713	45	26		1798	1802	81	10	5	24	14	113	75	+0.5	605
HJN1800M	1574.4	1940	1660	91	1887	1713	45	26		1798	1802	81	10	5	24	16	99	75	+0.5	605
HJN2000	1734.4	2178	1825	112	2110	1891	48	33		1998	2002	100	12	8	30	16	109	90	+0.5	893

Internal-toothed Single Row Crossed Roller Slewing Bearings



NOTE:

1. n1 is the number of lubricating oil holes, the customer can specify the location of oil holes according to the use situation.
2. n-φ can be changed into thread hole, thread diameter M, thread depth 2M.
3. The specifications in this sample are standard products, please contact SINOFOUV for any other special requirements.

[illegible]